



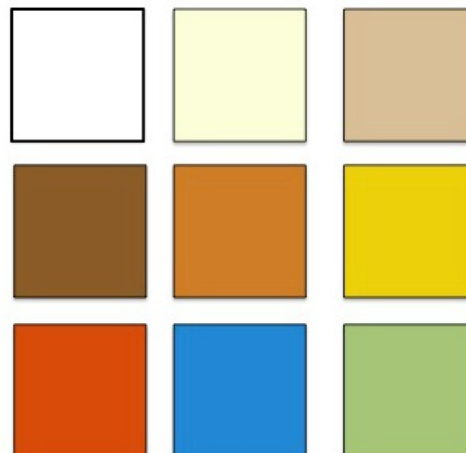
SONORAN TRAIL

Finished Size: 46" x 64"



Fabric Requirements:

- White- 1-1/2 yards
- Cream 1-1/2 yards
- Beige- 1-1/2 yards
- Brown- 1-1/2 yards
- Golden Brown- 1 yard
- Golden Yellow- 1 yard
- Brick Red- 1 yard
- Turquoise- 1 yard
- Olive Green- 1 yard
- Backing- 3-1/2 yards 42/44" wide
- Batting



Applique Options:

Blended Wool Applique and Embroidery (shown in these instructions)

For this project I used:

--1 ea. **Fall Pack from OvertheRiverFelt.com** (21 piece pack with 12" x 12" wool blend felt) in Army Green, Peat Moss, Sandstone, Pumpkin spice, Ember, Reets Relish, Honey Mustard, Enchanted Forest, Burnt Sienna, Rustic Crimson, Berry, Brown, Oakwood, Cinnamon, Turf Tan, Havana Gold, Canyon Ridge, Copper Kettle, Gold, Hay Bale, Driftwood

--1 ea. 12" x 18" sheet of Leapin Lizard wool blend felt (OvertheRiverFelt.com)

--1 ea. 12" x 18" sheet of Blue Magic wool blend felt (OvertheRiverFelt.com)

--Embroidery Floss in multiple colors to match felt colors

Other Applique options that could be used instead of blended wool include:

- Needle Turn Applique
- Fused Applique
- Raw Edge Applique

How to Pre-Wash Felt

Soak wool in warm water. Expect some bleeding from excess dye on dark colors, please keep colors separate during first washing. You can use a bit of laundry soap or not, it is your preference.

Squeeze as much water from felt but DO NOT twist or wring it, the felt will stretch out of shape. You may also end up with excess pilling.

Lay Flat to dry on a towel.

Depending on temperature of water, drying flat, expect some shrinkage. It can be anywhere from 3"-5" per square yard of fabric.

General Wool Felt Applique Instructions

There is a finished block illustration for each block and template pages for the individual felt applique pieces. The finished block illustration is to help you on layout of the block and includes block dimensions and embroidery suggestions. The template pages are actual size and can be used to cut your felt pieces.

- (1) Cut out fabric block about 2" larger in than the finished block will be.
- (2) Use a pencil and ruler to draw out the actual dimensions of your block (with 1/4" seam allowance). You will use these lines to help position your felt.
- (3) Determine what colors of felt that you would like to use for the block you are working on.
- (4) Cut out the template pieces for the block that you are working on.
- (5) Pin each individual piece to selected felt and use the templates to cut out your felt pieces.
- (6) Once all pieces are cut out of the felt, arrange on your fabric block, using the finished block illustration as a basis for arrangement.
- (7) Use a few small drops (very little) of clear washable school glue to tack the felt in place. (This is the technique that works for me, but feel free to use pins or other tacking techniques).
- (8) Once the glue has dried, you are ready for embroidery.

General Embroidery Instructions

Use two strands of embroidery floss.

Use a Blanket Stitch to stitch around all edges of each felt piece, using embroidery floss that closely matches the felt piece.

Do not use a hoop for this project as it will crimp your felt pieces.

Suggested embroidery stitches will be covered in more detail in each block instruction, but include the following:

Split Stitch, Chevron Stitch, Chain Stitch, Daisy Stitch, Threaded Running Stitch, and French Knot.

